



Understanding the global impact of diabetes to drive policy

Online event

23 June 2025
14:00-15:30 CEST



UNDERSTANDING THE GLOBAL IMPACT OF DIABETES TO DRIVE POLICY



WELCOME FROM THE MODERATOR



PARASKEVI SALPEA

IDF Epidemiology Manager

Greece

WELCOME FROM IDF

- This webinar will be recorded.
- You can activate Zoom-generated subtitles for this webinar by clicking on the closed caption (cc) button at the bottom of your Zoom window. Please note these subtitles are not 100% accurate.
- The recording, slides and feedback questionnaire will be sent to all registrants in a few days.
- Participants who attend at least 80% of this event live will receive an attendance certificate only if they complete a feedback questionnaire. Please check your spam folders if you have not received them by July 16.
- **Please use the Q&A function to post your questions to speakers and panellists.**



UNDERSTANDING THE GLOBAL IMPACT OF DIABETES TO DRIVE POLICY

WELCOME FROM THE IDF PRESIDENT



PROF PETER SCHWARZ

IDF President

Germany

Setting the scene





UNDERSTANDING THE GLOBAL IMPACT OF DIABETES TO DRIVE POLICY

THE IDF DIABETES ATLAS: GLOBAL, REGIONAL AND NATIONAL PREVALENCE ESTIMATES FOR 2024 AND PROJECTIONS FOR 2050



PROF ED BOYKO

IDF Diabetes Atlas Chair

US



UNDERSTANDING THE GLOBAL IMPACT OF DIABETES TO DRIVE POLICY

IDF DIABETES ATLAS DEMO: HOW TO FIND THE DATA YOU NEED



PARASKEVI SALPEA

IDF Epidemiology Manager

Greece



IRINI GENITSARIDI

IDF Data Scientist

Greece

IDF DIABETES ATLAS: 2000-2025



- An authoritative and valuable academic and advocacy tool, providing the latest data on the diabetes impact worldwide.
- It is made **freely** available for use by the diabetes community.

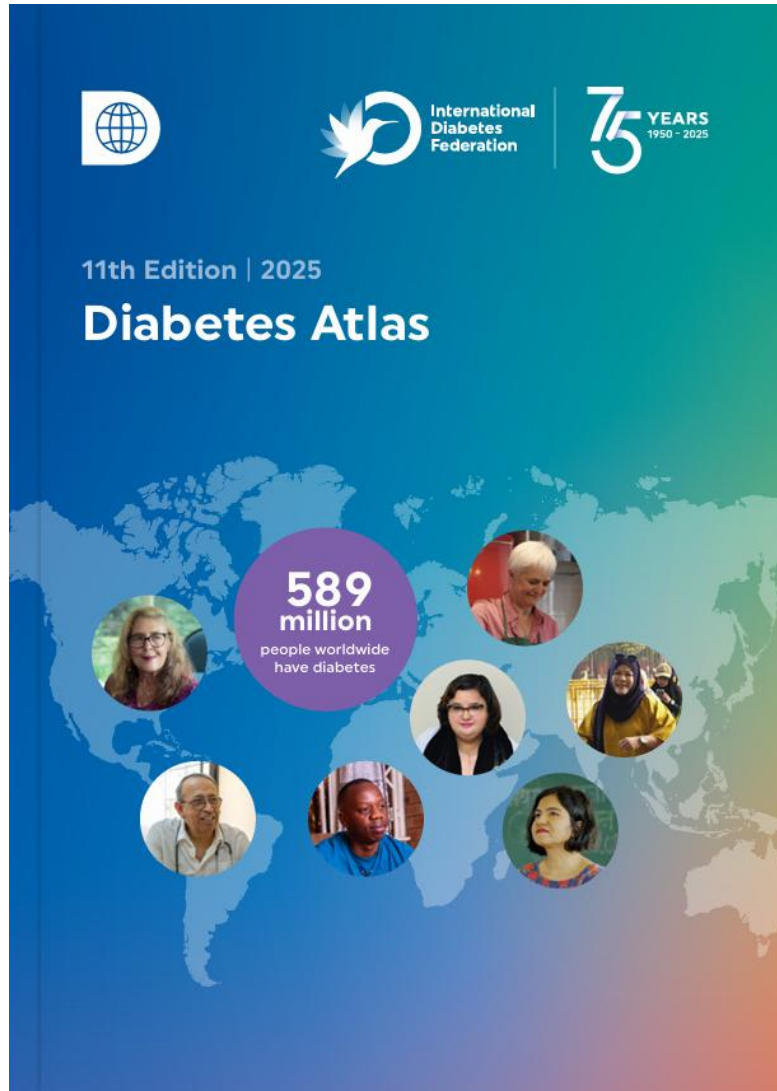
IDF DIABETES ATLAS , 11TH EDITION (2025)



Atlas estimates:

- Diabetes by country, region, global
- Diabetes-related mortality
- Diabetes-related health expenditure
- Diabetes in older adults (>65 years)
- Undiagnosed diabetes
- Intermediate states of hyperglycaemia (IGT, IFG)
- Hyperglycaemia in pregnancy
- Diabetes complications: Dementia, CVD, Retinopathy

IDF DIABETES ATLAS , 11TH EDITION (2025)



Atlas resources:

- PDF
- Data portal
- Factsheets: Global, Regional
- Power point presentation with key findings
- Podcasts, webinars
- Data sources
- Publications

Access the newly launched
IDF Diabetes Atlas 11th edition:



IDF Diabetes Atlas Demo



The advocates experience





UNDERSTANDING THE GLOBAL IMPACT OF DIABETES TO DRIVE POLICY

THE ADVOCATES EXPERIENCE USING THE IDF DIABETES ATLAS



LUCÍA FEITO ALLONCA

IDF Blue Circle Voice member

Argentina/Spain

USING THE IDF DIABETES ATLAS FOR STRONGER DATA-DRIVEN ADVOCACY



Data shapes funding and policies



WHY DATA MATTERS IN ADVOCACY



Personal stories connect us.



But data drives decisions,
funding, and policy.



The IDF Diabetes Atlas gives us
reliable, up-to-date, and
comparative data.



It turns personal experiences
into evidence-based advocacy.

THREE WAYS TO USE THE ATLAS

1. Understand the global picture:

- 589M (2024) → 852M (2045), 1 in 10 → 1 in 9
- Africa: 4.2% prevalence, >50% undiagnosed
- North America: 15% prevalence, >\$9,000/year per person

2. Identify advocacy priorities:

- 3 in 4 live in LMICs
- Major gaps: diagnosis, access, education

3. Create powerful messages:

- Example: "By 2050, 1 in 8 adults will live with diabetes."
- Use Atlas infographics



Turn data into action

Advocacy is not only about passion — it's also about impact.

The IDF Diabetes Atlas helps us amplify voices with evidence.

UNDERSTANDING THE GLOBAL IMPACT OF DIABETES TO DRIVE POLICY



THE ADVOCATES EXPERIENCE USING THE IDF DIABETES ATLAS



RAVI SUBRAMANIAN

IDF Blue Circle Voice member

Australia

USING THE DIABETES ATLAS AS A PERSON LIVING WITH T2DM FOR 27 YEARS



USING THE DIABETES ATLAS AS A RESEARCH STUDENT



USING THE DIABETES ATLAS FOR ADVOCACY

Advocacy tips **Know the evidence**

-  Carry out your own reading and research
-  Locate global and regional data with the IDF Diabetes Atlas and website
-  Check out the IDF Atlas Regional Factsheets
-  Download up-to-date graphics, slides and other resources from the IDF Atlas website
-  Consult the diabetes glossary on the IDF Diabetes Atlas website

Discussion panel and Q&A



Closing remarks



CLOSING REMARKS AND THANKS

- The recording, slides and feedback questionnaire will be sent to all registrants in a few days.
- Please respond to the feedback questionnaire to help us improve future IDF online events.
- Send any questions you may have to atlas@idf.org.

Thank you!

