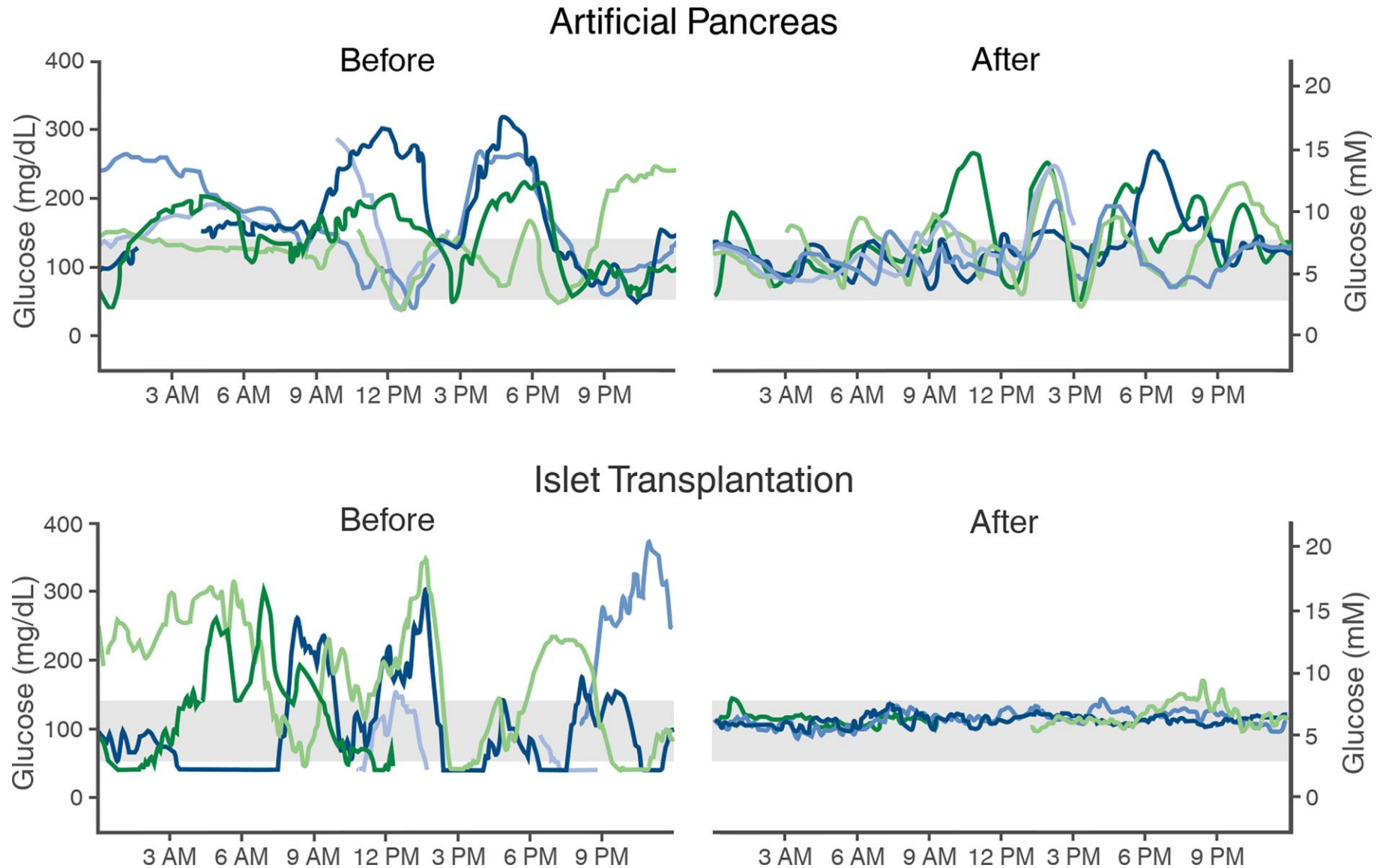
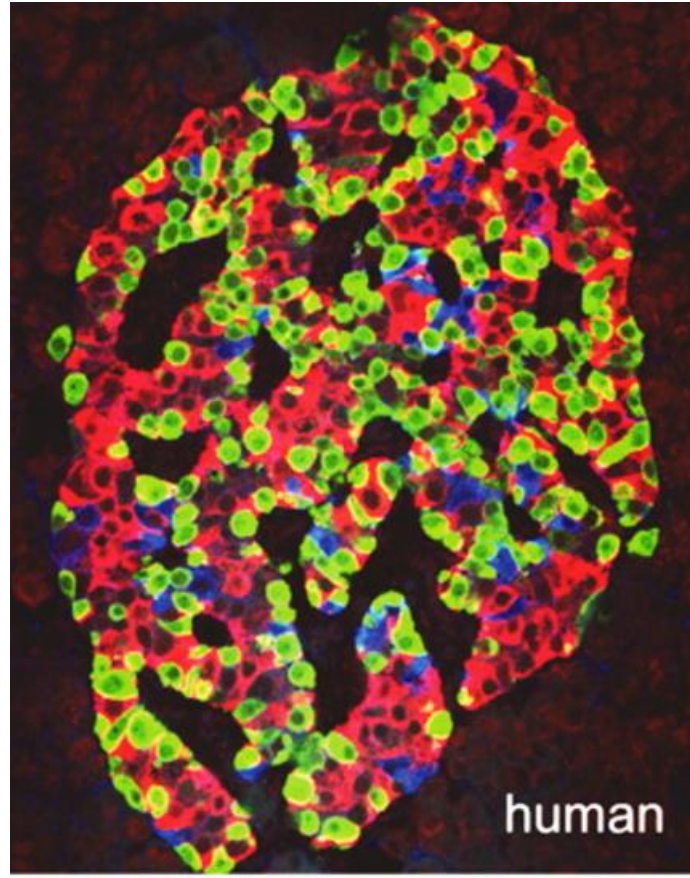


**Advancing Innovative
Stem Cell-Based Therapy
For Diabetes**

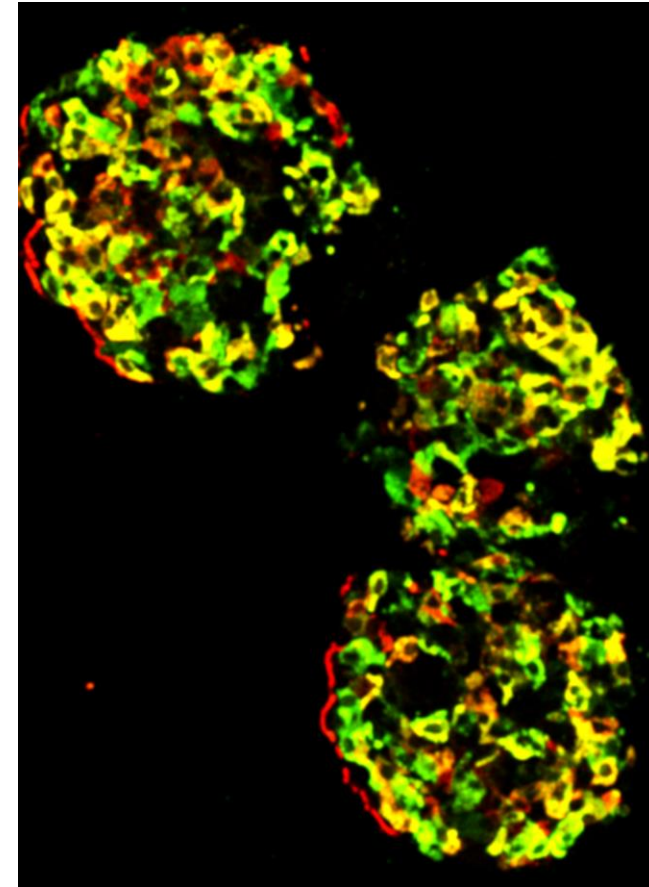
Advantages of cell therapy (islet transplantation)



Golden standard – human islet



Human embryonic stem cell-derived islet like clusters

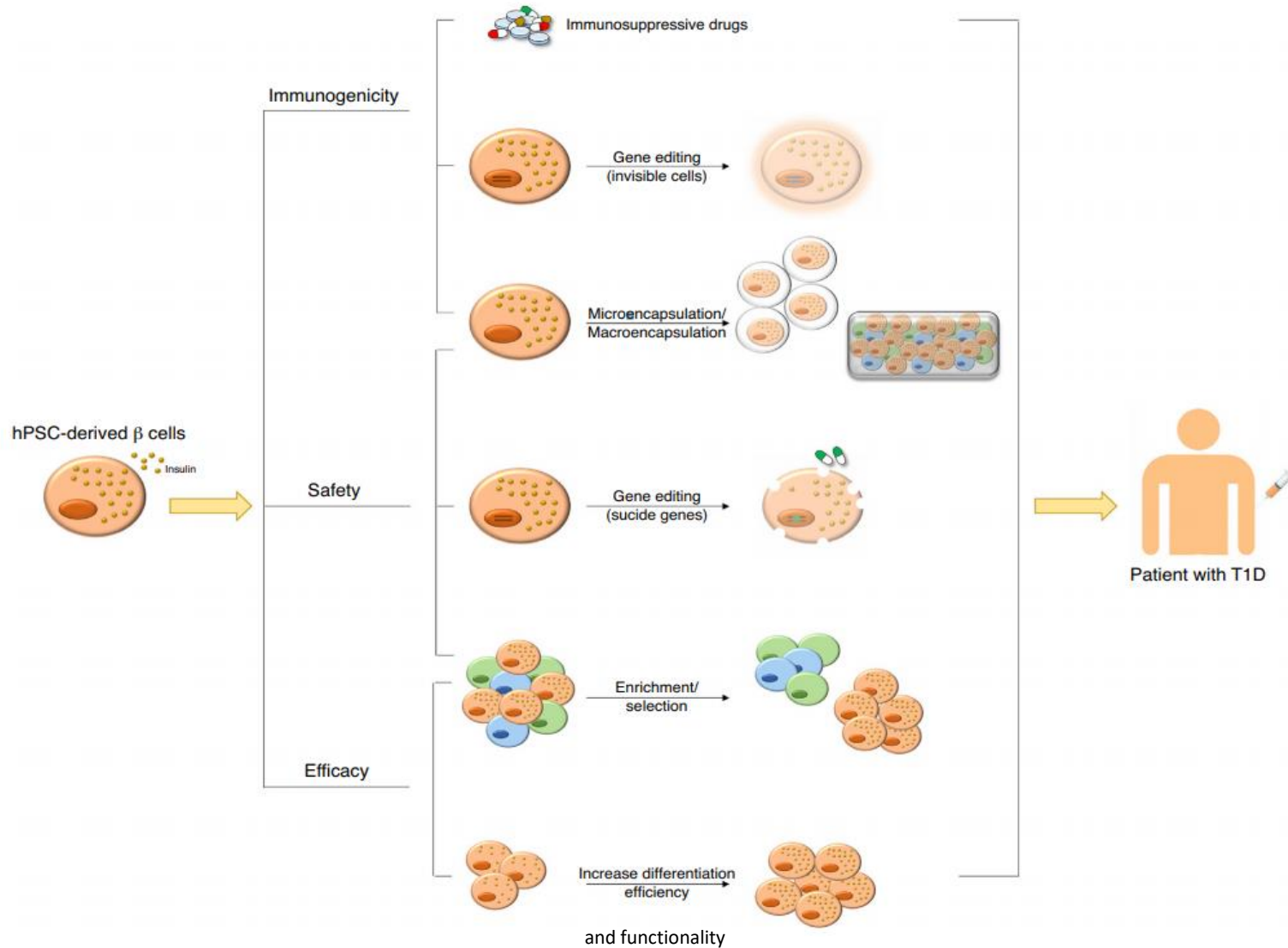


Insulin
Glucagon

Opportunities

- Unlimited source for islet cells (including beta cells)
- Provides a system for designing an optimal (therapeutically) product

Challenges and future perspectives



Why am I doing this?